



The world's true measure of color

**HunterLab**

**Agera<sup>®</sup>**

*Color & Appearance Measurement*



measure  
**color**  
the way your  
**eye** sees it



## Color. Gloss. Imaging.

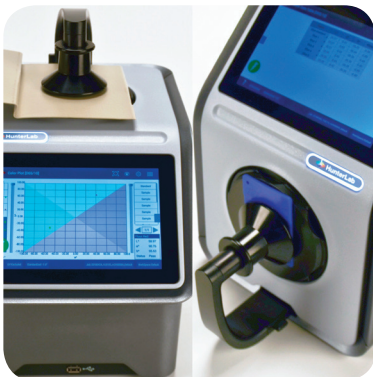
Offering simultaneous measurements of reflected color, 60-degree gloss, and image capture in one simple measurement, Agera provides unique functionality with exceptional flexibility and ease-of-use. With a small footprint that takes up little space, Agera is the ideal solution for measuring the reflected color and gloss of a variety of sample types. Leveraging a modern user interface, robust embedded quality control software, and state of the art communication options, Agera provides unprecedented value for use.



*Innovation for Simplicity*

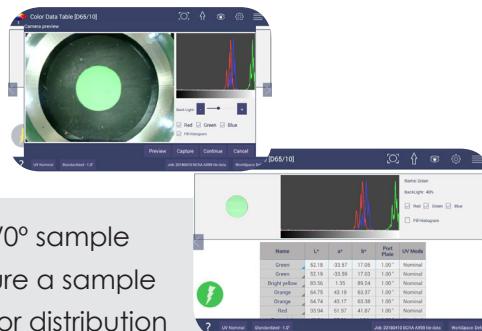
## Agera Features

- Color, ASTM 60-degree gloss measurement and sample imaging capabilities
- 0/45° optical geometry and controlled LED illumination of 360-700 nm
- Port sizes of LAV 2 - 51 mm (2 in) (the largest area of view in the industry), LAV 1 - 25.4 mm (1 in) and SAV - 16.9 mm (5/8 in) provide optimized color results for varying sample sizes and textures



Port up or port forward sample measurements

- Measurements of optically brightened samples is accomplished through controlled UV source that provides Calibrated UV and UV Excluded reported in a single measurement process



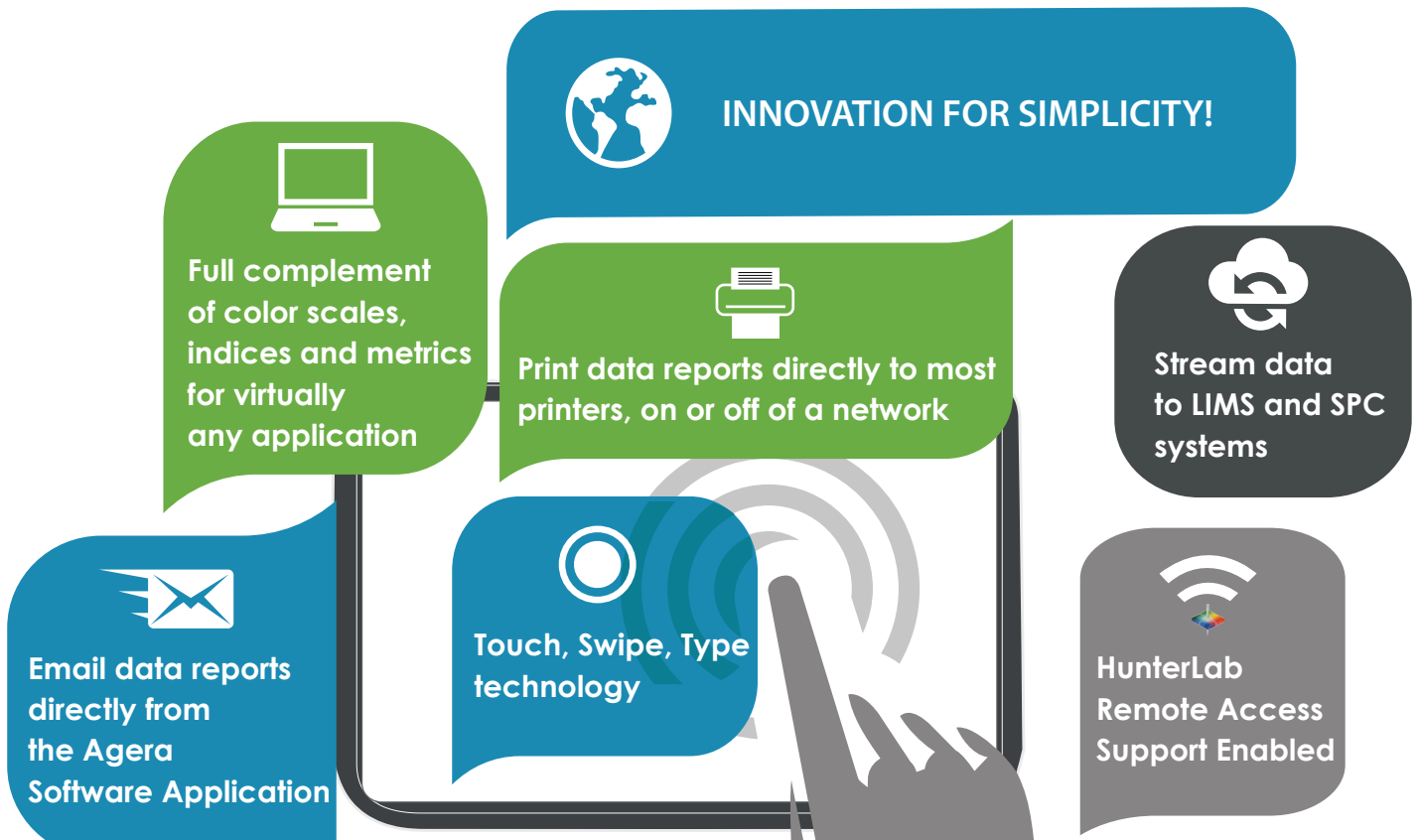
Embedded high-resolution camera provides true 45/0° sample viewing during measurement preparation, will capture a sample image, and provide an RGB histogram of image color distribution

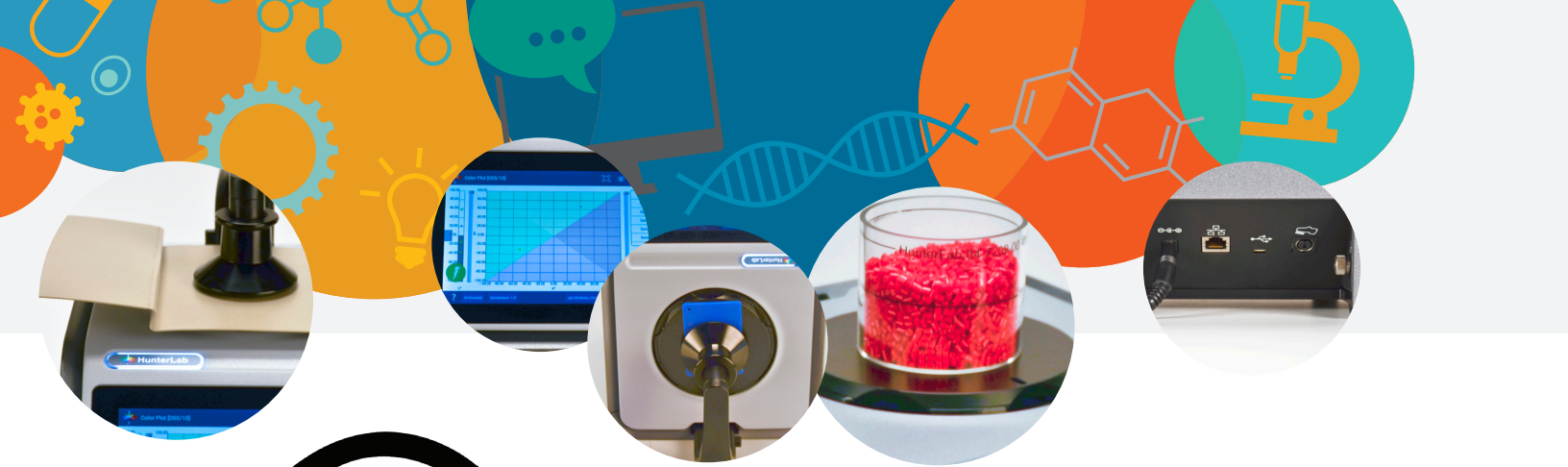
## Smart Display - Designed for Industry 4.0

- Hi-Res, Full Color Touch Interface
  - Durable industrial glass
  - Touch, Swipe, Type technology
  - Easy to read and view color data and graphics
- Embedded Color Quality Control Software
  - No PC required
  - All the color scales, indices and metrics you need
  - Intuitive and easy to learn user workflow



## Smart Communications – All in One Technology





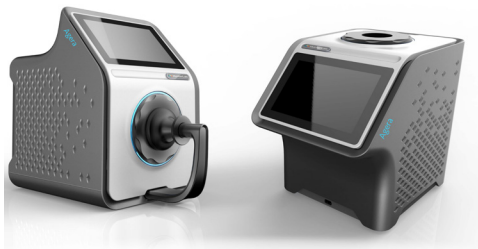
## HunterLab Remote Access Support Enabled

HunterLab Remote Access Support is a unique support tool that enables the HunterLab support team to directly interface with your instrument to perform diagnostics, update instrument software and provide live operator training.

To learn more go to: <https://www.hunterlab.com/remote-access-support.html>



## What's in the box - *Everything you need to get it right.*



Agera® Reflectance Spectrophotometer



Standards box includes:

- Calibrated white tile (NIST Certificate of Traceability)
- Green diagnostic tile
- Calibrated black glass



Port Plates:

LAV 2 - 51 mm (2 in), LAV 1 - 25.4 mm (1 in), SAV 16.9 mm (5/8 in)



Power supply (100-240 VAC)

## Optional Accessories:



Sample Clamp



Glass Sample Cup



63.5 mm (2.5 in) Port Plate

For more information go to [www.hunterlab.com](http://www.hunterlab.com) or contact your local HunterLab representative.

HunterLab and Agera are Trademarks of Hunter Associates Laboratory, Inc. Content subject to change without notice



ISO 9001 Certified; CE Certified  
Hunter Associates Laboratory Inc., 11491 Sunset Hills Road, Reston, VA 20190-5280  
Tel 703.471.6870 • Fax 703.471.4237 • sales@hunterlab.com • www.hunterlab.com