



FX 3000-IV HydroTester
Automatic Hydrostatic Head Tester



FX 3000-IV HydroTester with many Benefits

The fourth generation of the FX 3000-IV Hydrostatic Head Tester convinces by its versatility, its user-friendliness and its wide measuring range. The instrument measures in compliance with AATCC 127, ASTM F 1670, BS 2823, DIN 53886, EN 1734, EN 20811, FZ/T 01004, GB/T 4744, GB 19082, ISO 811, JIS L 1092 A, JIS L 1092 B-a+b, WSP 80.6 and many other national and international test standards.

- ✓ **Benefit thanks to a wide measuring range**
The FX 3000-IV HydroTester allows measurements of up to 7 bar (70 m water column). Different models with different pressure maximums meet every customer requirement.
- ✓ **Benefit thanks to high accuracy**
High-precision pressure sensors provide not only for highly accurate results, but also for precise and stable pressure gradients, even in the lower pressure ranges.
- ✓ **Benefit thanks to Automatic Drop Detector**
The optional FX 3000-IV AUT Automatic Drop Detector eliminates the need for an operator to observe the sample and to manually terminate the test. Once the preset number of water drops has penetrated the sample, the test is automatically stopped and the result is displayed.
- ✓ **Benefit thanks to Automatic Level Control**
The optional FX 3000-IV ALC Automatic Level Control fills the water tank and compensates for any water loss in between measurements – reliably and at the push of a button.



TEXTEST FX 3000-IV HydroTester with the FX 3000-IV AUT Automatic Drop Detector

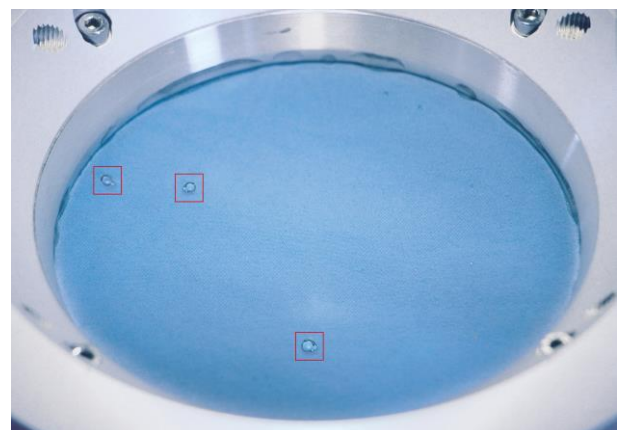
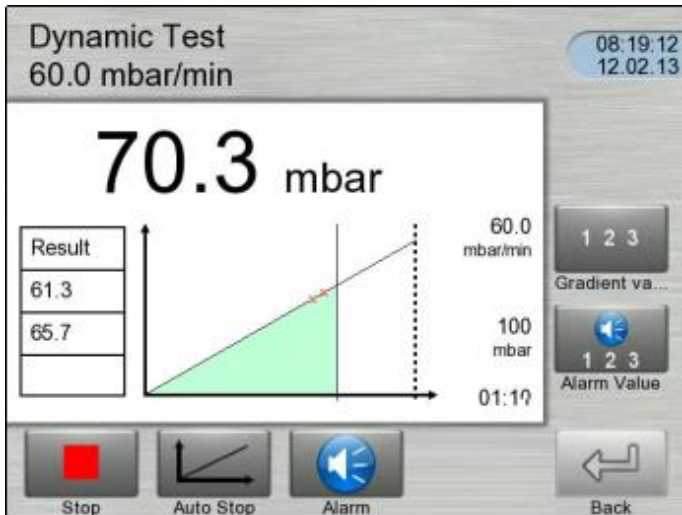


Image of the test sample with three drops



Touch display for operation of the instrument

TEXTTEST INSTRUMENTS Hydrostatic Pressure Test

Basic data		
Style:	SAMPLE STYLE 654	
Reference:	EN243	
Date:	24.11.2014	
Time:	15:29:49	
Instrument:	FX 3000-4H	
Serial Number:	100	
Settings		
Program name:	DYNAMIC TEST 60 mbar-min	
Program number:	1	
Program part 1:	Dynamic test 60.0 mbar/min End of Test	
Stop criterion:	3 rd drop	
Test area:	100 cm ²	
Norm / Min / Max:	40.0 / 30.0 / 50.0 mbar	
Statistical analysis		
	1 st drop	3 rd drop
Average:	33.6 mbar	35.4 mbar
Minimum:	32.9 mbar	34.1 mbar
Maximum:	35.2 mbar	37.2 mbar
CV:	2.85 %	3.20 %
Test results		
	1 st drop	3 rd drop
1:	35.2 mbar	37.2 mbar
2:	33.1 mbar	34.1 mbar
3:	33.1 mbar	35.1 mbar
4:	32.9 mbar	34.9 mbar

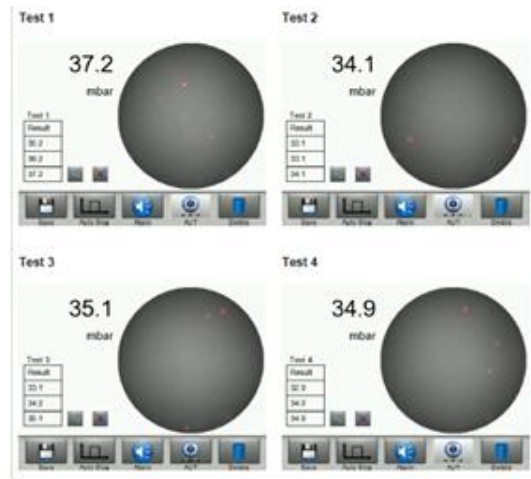
Test report generated with FX 3000-IV EVA

✓ **Benefit** thanks to a high clamping force

A manual clamping mechanism, depending on the model supported by a pneumatic cylinder, provides an even clamping force and effectively prevents lateral water leakage.

✓ **Benefit** thanks to evaluation and printing options

The instrument can be connected to a network by ethernet cable or WLAN. With the optional evaluation module FX 3000-IV EVA, test reports in PDF or XML can be downloaded from the instrument's web server. Alternatively, an integrated strip printer FX 3000-IV PRI is available.



Test report generated with FX 3000-IV EVA and FX 3000-IV AUT

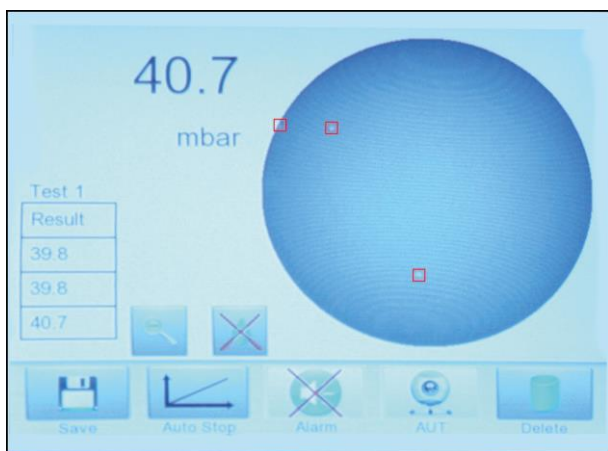


Image of the FX 3000-IV AUT Automatic Drop Detector with three drops



Technical Specifications

• Measuring range	0 ... 500 mbar	Model FX 3000-4L-PUM
	0 ... 2'000 mbar	Model FX 3000-4M
	0 ... 5'000 mbar	Model FX 3000-4H
	0 ... 7'000 mbar	Model FX 3000-4H+
• Static Test Method (Test pressure)	10 ... 500 mbar	Model FX 3000-4L-PUM
	10 ... 2'000 mbar	Model FX 3000-4M
	10 ... 5'000 mbar	Model FX 3000-4H
	100 ... 7'000 mbar	Model FX 3000-4H+
• Dynamic Test Method (Pressure gradient)	1 ... 500 mbar/min	Model FX 3000-4L-PUM
	1 ... 1'000 mbar/min	Model FX 3000-4M
	1 ... 1'000 mbar/min	Model FX 3000-4H
	10 ... 4'000 mbar/min	Model FX 3000-4H+
• Program Test Method	Freely programmable time-pressure sequences	
• Units of measurement	bar, mbar, m w.c., cm w.c., mm w.c., kPa, psi	
• Measuring accuracy	±0.5 % of the displayed value ±1 mbar	
• Test area	100 cm ² (10 cm ² , 26 cm ² and 28 cm ² as options)	
• Sample thickness	0 ... 5 mm	
• Clamping force	Ca. 2'000 N (manual)	Model FX 3000-4L-PUM
	Max. 8'000 N	Model FX 3000-4M
	Max. 20'000 N (manual, pneumatic support)	Model FX 3000-4H
	Max. 25'000 N	Model FX 3000-4H+
• Data ports	USB 2/3	
	Ethernet and Wi-Fi as options	
• User interface	Touch display	
• Power requirements	90 ... 240 VAC, 50 ... 60 Hz, 200 W	
• Compressed air requirements	None, internal pump	
	4 ... 8 bar (clean and dry, ap-	Model FX 3000-4L-PUM
	6 ... 8 bar prox. 10 NL per test	Model FX 3000-4M
	9 ... 10 bar cycle)	Model FX 3000-4H
• Dimensions (w x d x h)	40 x 65 x 71 cm	
• Weight	Approx. 70 kg	

Subject to change.

A certificate of calibration in compliance with ISO/IEC 17025:2017 and a check plate is included with each FX 3000-IV HydroTester.



SWISS CALIBRATION
SERVICE