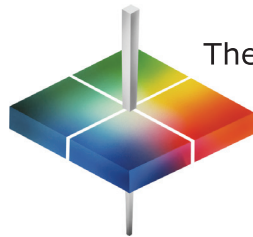


ColorFlex® L2 Coffee Quick Start Guide

A60-1021-738 ver. 1.0



The world's true measure of color

HunterLab

A SETTING UP THE INSTRUMENT

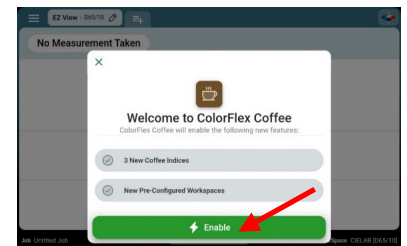
1. Connect the plug on the AC adapter to the port on the back of the ColorFlex L2 Coffee.



2. Plug the power cord on the AC Adapter into a wall outlet.
3. Turn on the ColorFlex L2 Coffee using the switch on the back of the instrument.
4. The Essentials software will launch automatically and prompt First Time Setup dialog to setup Languages, Region, Date and Time. Click **DONE** when finished.
5. After the setup above, a Welcome Wizard will be prompted to introduce its features. Please follow the prompts to familiarize yourself with the software. Once completed, your instrument will be ready for standardization. You can always click the HunterLab icon in the top right corner to run the Wizard again.
6. (Optional) Connect a monitor to the ColorFlex L2 Coffee using an HDMI cable.

B COFFEE LICENSE ACTIVATION

1. Attach the flash drive with the Coffee license file to the ColorFlex L2 Coffee. Essentials will automatically recognize the license file in the flash drive and prompt a dialog. Click **ENABLE** to load the ColorFlex L2 Coffee Essentials.

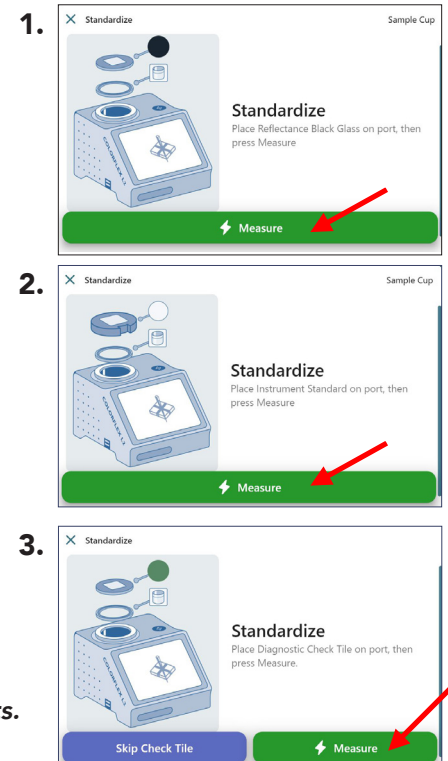


C STANDARDIZATION

1. Install the standard port plate (31.8mm;1.25-in). Place the Reflectance Black Glass at the sensor port. Press the **STANDARDIZE** button.
2. When prompted, remove the Reflectance Black Glass and place the Calibrated Instrument Standard (White Tile) on the port. Press **MEASURE**.
3. Remove the Calibrated Instrument Standard (White Tile). Then Place the Diagnostic Check Tile (Green Tile) at the port and press **MEASURE** to continue. The Diagnostics Check Tile values for 1.25" standard port plate are entered at the factory and listed on the back of the tile.

Optional: To skip the Diagnostics Check Tile test, tap **SKIP CHECK TILE**. Skipping may impact instrument performance, and a warning message will be displayed.

Note: If the Diagnostics Check Tile fails, clean the Calibrated Instrument Standard (White Tile), Diagnostic Check Tile, and/or Black Glass, and run the test again. Contact HunterLab Support if the issue persists.



D HUNTERLAB REFERENCE STANDARD-COFFEE

HunterLab Reference Standard-Coffee - use this to verify your instrument is correctly measuring the coffee brown color. It can be run from:

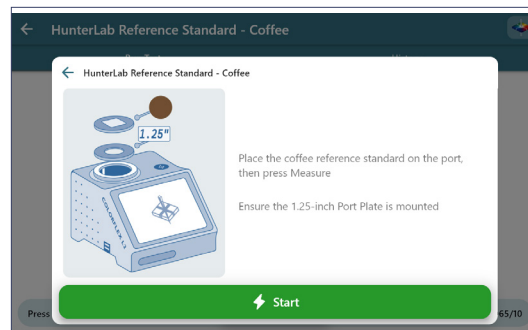
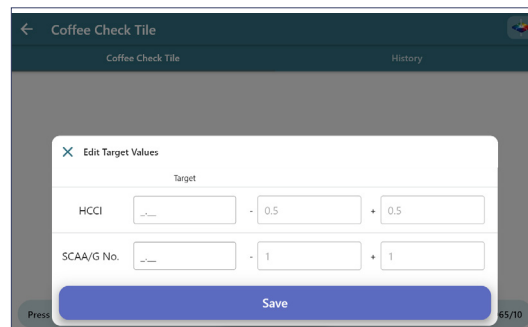
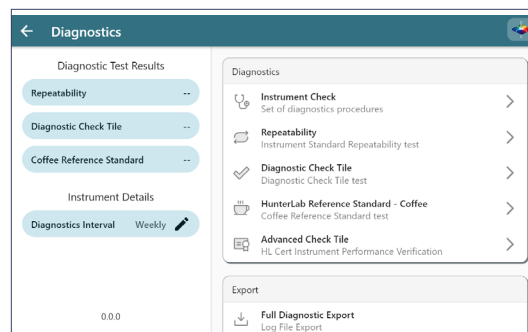
System Menu → **Instrument Settings** → **Diagnostics** → **HunterLab Reference Standard-Coffee**,

or as part of the full diagnostics sequence under:

System Menu → **Periodic Diagnostics**,

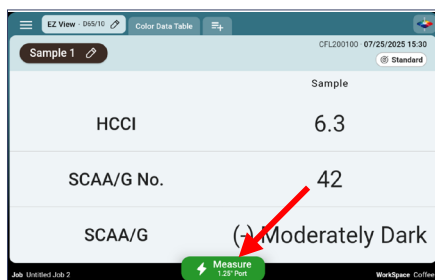
which includes the Signal Test, Repeatability Test, Diagnostics Check Tile (Green Tile), and HunterLab Reference Standard-Coffee. Follow the prompted screen to run the HunterLab Reference Standard-Coffee test.

The measured values should match the reference values on the back of the HunterLab Reference Standard-Coffee within ± 0.5 for HCCI and ± 1.0 for SCAA.



E READING SAMPLES

1. Prepare the sample and place it into the petri dish.
2. Place the sample on the port. Press **MEASURE**.



When a new instrument is turned on, it loads with the following default Workspace:

Display: EZ View
Color Indices: HCCI, SCAA/G No., SCAA/G
Ill/Observer: D65/10-degree
Standard Type: Ad hoc/Working

Note: There are two default WorkSpaces created: CIELAB (D65/10) and HunterLab (C/2). These WorkSpaces cannot be modified. However, you can edit the Workspace and save it under a new name.

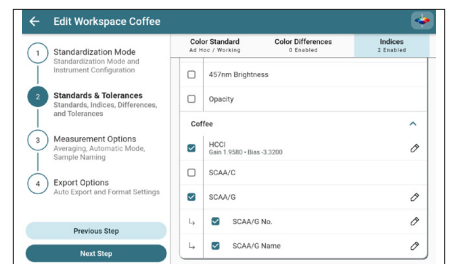
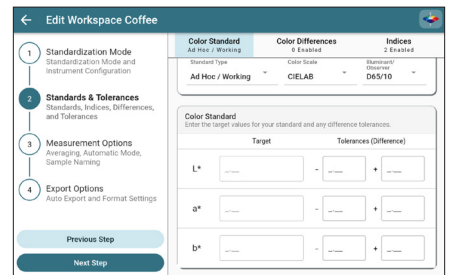
F SETTING UP A STANDARD AND COFFEE INDICES

1. In the Coffee WorkSpace (Ad hoc/Working standard type), the first sample reading is automatically set as the standard. To change it, read a new sample, click the pencil icon in the Sample Name Box and select **SET AS STANDARD**.

Alternately, Press **WORKSPACE** at the bottom right side of the screen. Select **EDIT CURRENT WORKSPACE**. Press **NEXT STEP** to go to **STANDARD & TOLERANCES** step. Here, you can create a Numeric, Physical, or Hitch standard.

To select additional Coffee indices:

2. Tap the **INDICES** tab and then scroll down to Coffee Scores. Check the desired Coffee Indices. Use the pencil icon to add tolerances, and choose either Absolute or Difference tolerances as needed.



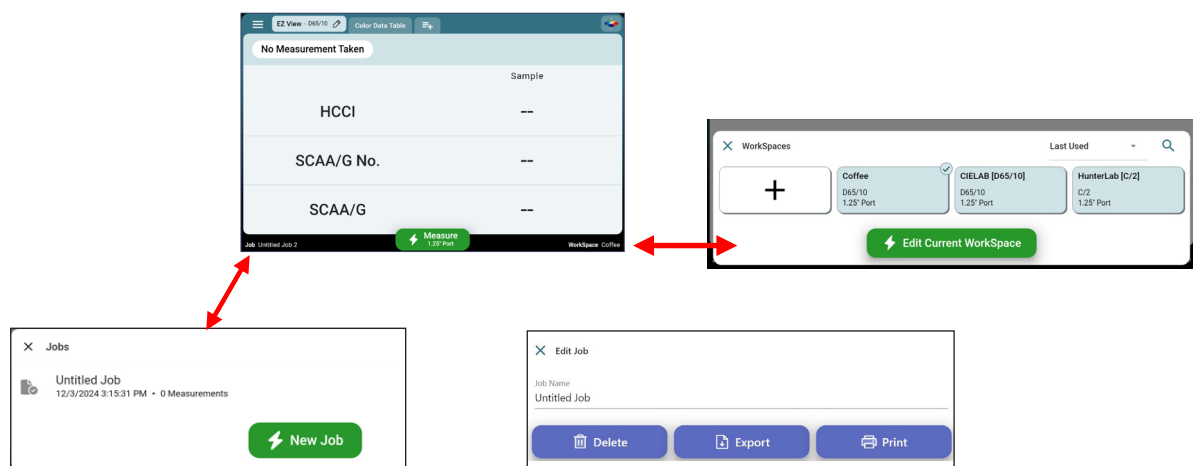
G EDITING EZ VIEW TO SHOW SIMPLE DIFFERENCES

1. From the main screen select the edit icon next to EZ View tab. Then select **DISPLAY OPTIONS**. Click on the radio button next to **SHOW STANDARD** and **SHOW DIFFERENCES** and this will display simple differences.


	Standard	Sample	Difference
HCCI	6.3	6.3	0.0
SCAA/G No.	42	42	0
SCAA/G	(-) Moderately Dark	(-) Moderately Dark	--

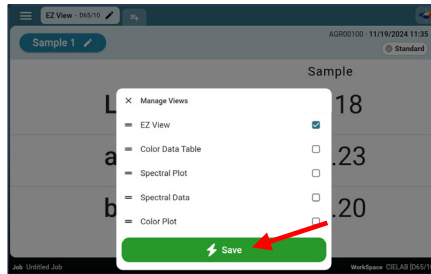
H CHANGING OR ADDING WORKSPACES/JOB

1. Press the **WORKSPACE** name on the bottom right side of the screen to change or add a new WorkSpace. Follow the WorkSpace dialog to edit differences/indices, read options, data export options and so on.
2. Press the **JOB** name on the bottom left side of the screen to create a new job or tap one existing job to edit job name, delete/print the job and export job (.xls, .csv or .pdf file).



J ADDING VIEWS

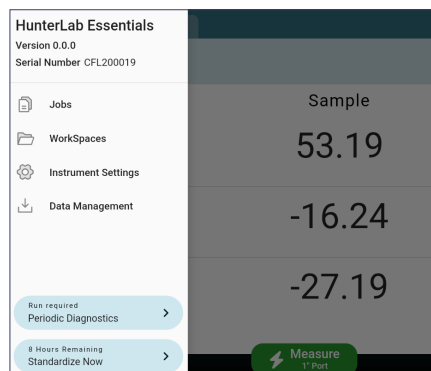
1. Use the view icon  next to the EZ View tab to add other views. Select the view by clicking on the box next to the desired view. Press **SAVE**.



J MORE UNDER SYSTEM MENU

Tap the 3-bar icon on the top left corner of the screen to launch System Menu:

1. **Jobs/Workspaces** are alternate ways to open WorkSpace/Job dialogs.
2. **Instrument Settings** allows for selection of Standardization Interval, importing of product setups from the ColorFlex EZ instrument, date/time change, language selection, reverse screen orientation, and security setup.
3. **Data Management** allows users to save job and workspace files in .ezm2 format (not readable in external applications) to a flash drive.
4. **Periodic Diagnostics** displays the status of diagnostics and enable users to run diagnostics.
5. **Standardization** shows the current status and allows users to perform standardization.



For more detailed instructions on using the instrument, please refer to the ColorFlex® L2 Coffee User's Manual. Visit support.hunterlab.com for more information on maintenance, operation and repair of your instrumentation.