

PICOFLOW

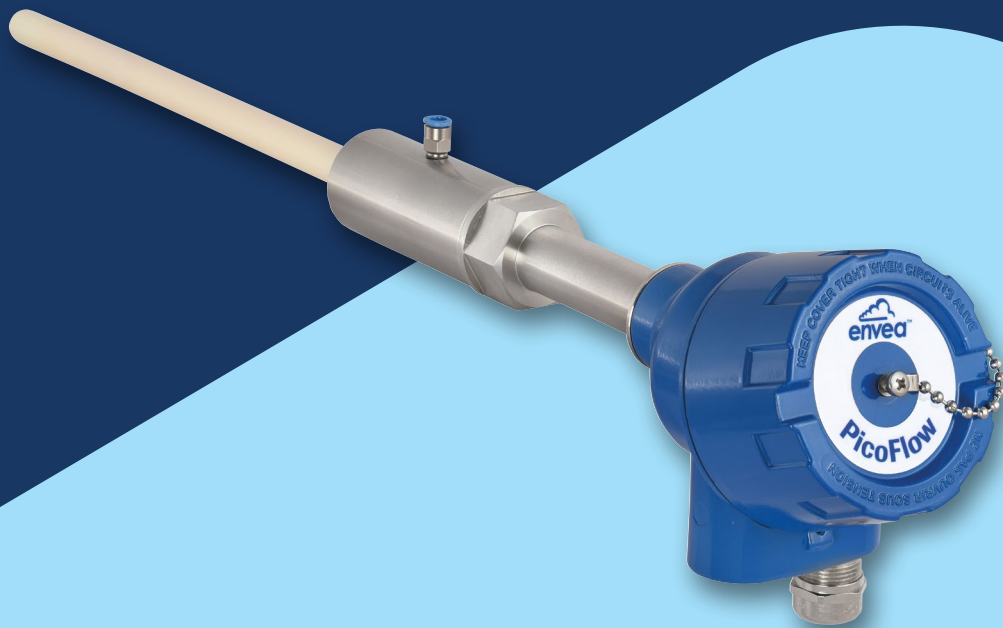
CONTINUOUS FLOW MEASUREMENT AT
LOW SOLID/HIGH AIR RATIOS



The PicoFlow provides continuous measurement of powder flows in g/h or kg/h in transport lines

FEATURES AND BENEFITS

- In pneumatic applications for small material concentrations in the pipe
- In free-fall with a drop speed of at least 2 m/s (approx. 25 cm drop height)
- In cases where dust measuring instruments cannot cope and flow rate measuring instruments are overspecified



certified to ATEX

MOUNTING AND INSTALLATION

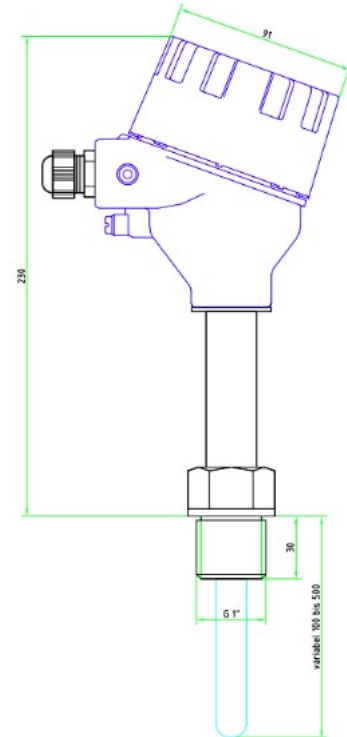
The PicoFlow can be installed in metallic ducts and pipelines.

It should be installed as far as possible away from curves and other fittings such as valves and slides.

The distance between the sensor rod and fittings in the duct should be at least three times the duct diameter in every flow direction.

Non-metallic ducts must be cased with a metal sleeve, a metal foil or a tight-mesh metal grille over a length of at least five times the duct diameter.

After deciding the installation location, drill a hole in the duct wall where the supplied weld-on socket can be welded perpendicular to the pipe. Then screw the sensor rod into the socket using the screw-in thread.



TECHNICAL SPECIFICATIONS

Sensor	
Housing	Aluminium
Protection type	IP66; ATEX: Cat. 1/2 GD
Operation temperature	Process: -20 ... +150°C Ambient: -20 ... +60°C
Max. working pressure	10 bar
Weight	1.5 kg
Sensor rod	Stainless steel, ceramic coated, max. 450 mm
Accuracy	± 5% in calibrated range