

MAXXFLOW HTC

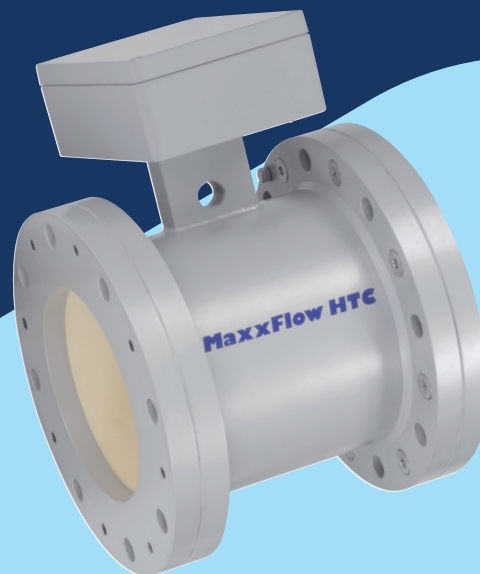
FLOW MEASUREMENT FOR DRY BULK SOLIDS



MaxxFLOW HTC records density and speed as material falls from a conveyor with accurate measurements certain

FEATURES AND BENEFITS

- Most non-metallic solids can be measured
- Can be installed on round pipes or ducts
- No real upper limit of mass flow
- Dust tight
- No flow restrictions to the process flow (wear resistant ceramic liner)
- The mass flow measurement is independent of flow characteristics
- Maximum temperature: 120°C
- Can be installed at an angle
- Small installation height, max. 310 mm
- No moving parts, hence no maintenance
- Easy to calibrate



TECHNICAL SPECIFICATIONS

Sensor

Housing material	Steel St 52, powder-coated NW 80/100/150/200 mm, Flange according EN 1092-1 / PN10
Inner pipe	Al ₂ O ₃ -Ceramic
Protection category	IP65
Operating temperature	Sensor pipe: - 20 ... + 120°C Sensor electronic: 0 ... + 60°C
Max. working pressure	1 bar
Working frequency	88 kHz
Transmitting power	Max. 2 mW
Weight	Depend on diameter
Accuracy	± 1 ... 3% (based on end of measuring range and calibrated material)
System accuracy	± 0.04%

DIMENSIONS

